

# Design challenge brief

---

“

Re-design the existing application that allows users to record mobile medical screenings used to improve CMS Star Ratings, close HEDIS gaps, assist in wellness and health assessment programs.

The applications allows the user to login, capture and transfer clinical screening data for their patients via a tablet device with an intuitive interface.

Re-design the **login screen** and the **dashboard screen** to make the application more intuitive and information and data easy to understand.

Make **best use of screen real estate** with the look and feel in sync with the latest **ios 7** visual language.

”

# Typical Design process

---

**Research** - Interviewing, Bricks and mortar visit, Observations.

**Synthesis** - Brainstorming, Focus areas, Service experience blueprint.

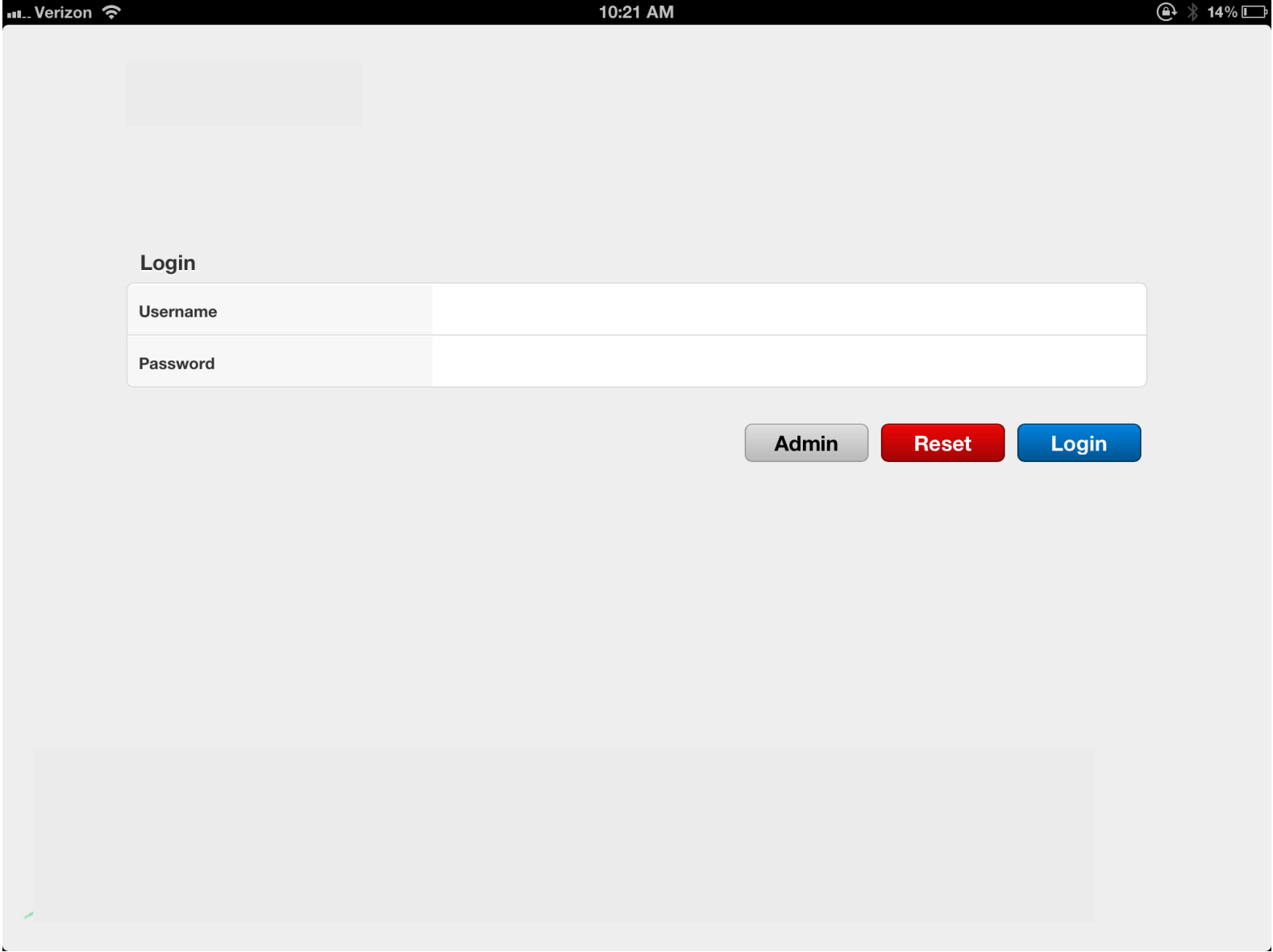
**Design** - Brainstorming, Storyboarding, Need validation.

**Solution** - Wireframing, Low fidelity, High fidelity prototyping, Development.

# 02 | The Re-design

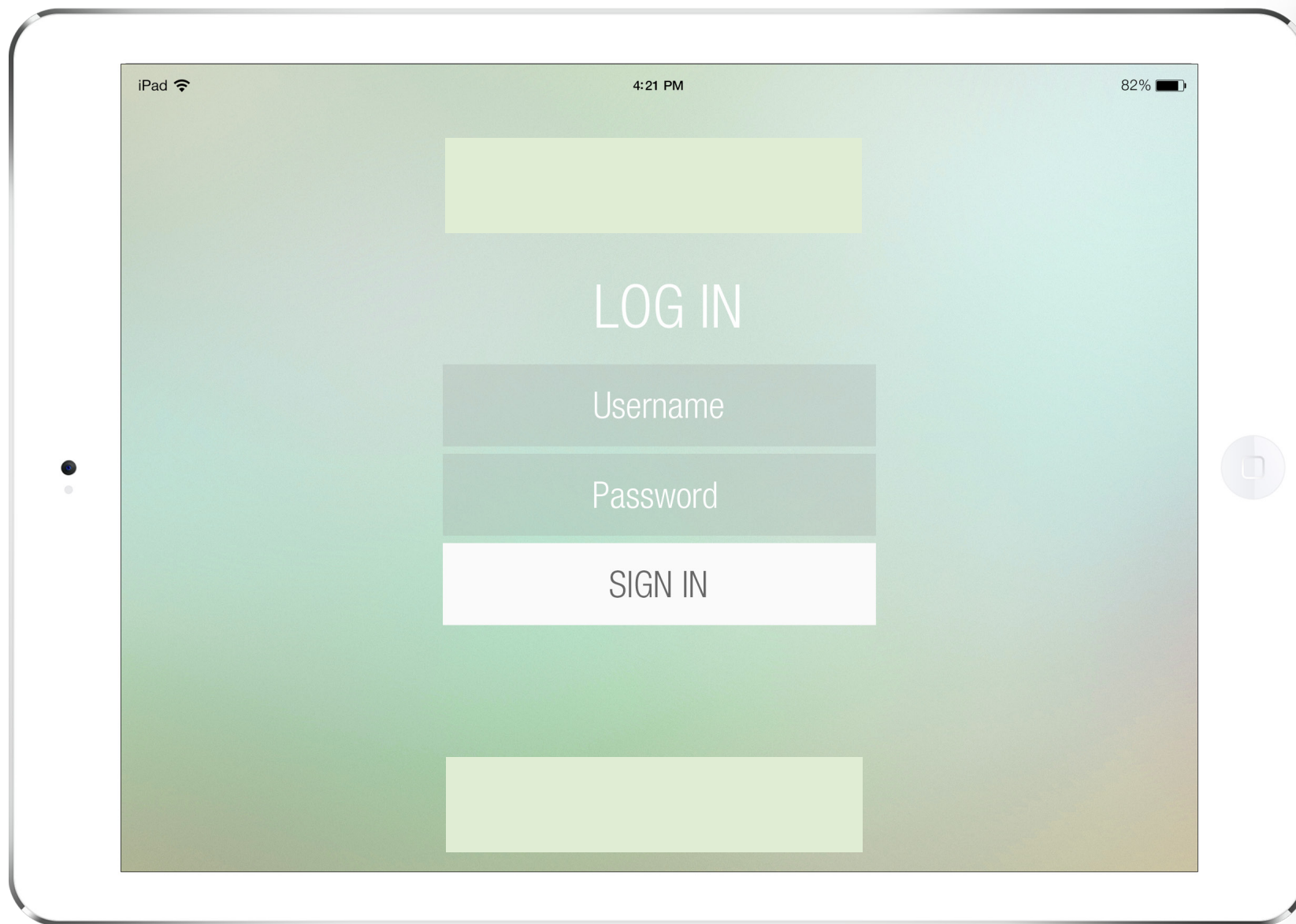
# Log-in Screen : Old Version

---



# Log-in screen: Re-design

---



# Design Features Targeted

---

Clean interface with lots of breathing space.

Easy no fuss login.

Use of blue-green cool color palette-calming and soothing colors for stressed out eyes.

Look and feel in sync with Apple's iOS 7 flat, clean and colorful look and feel.

# Dashboard Screen : Old Version

Verizon
2:56 PM
19%

**Status: Open**  
[Back to Events](#) [Close Event](#) [Duplicate](#)

**11/21/2013 San Bernardino**

Not Checked in Yet:  
**1**

Staff Available:

**4**

Checked In:

**3**

Registered Members:

**10**

Checked Out:

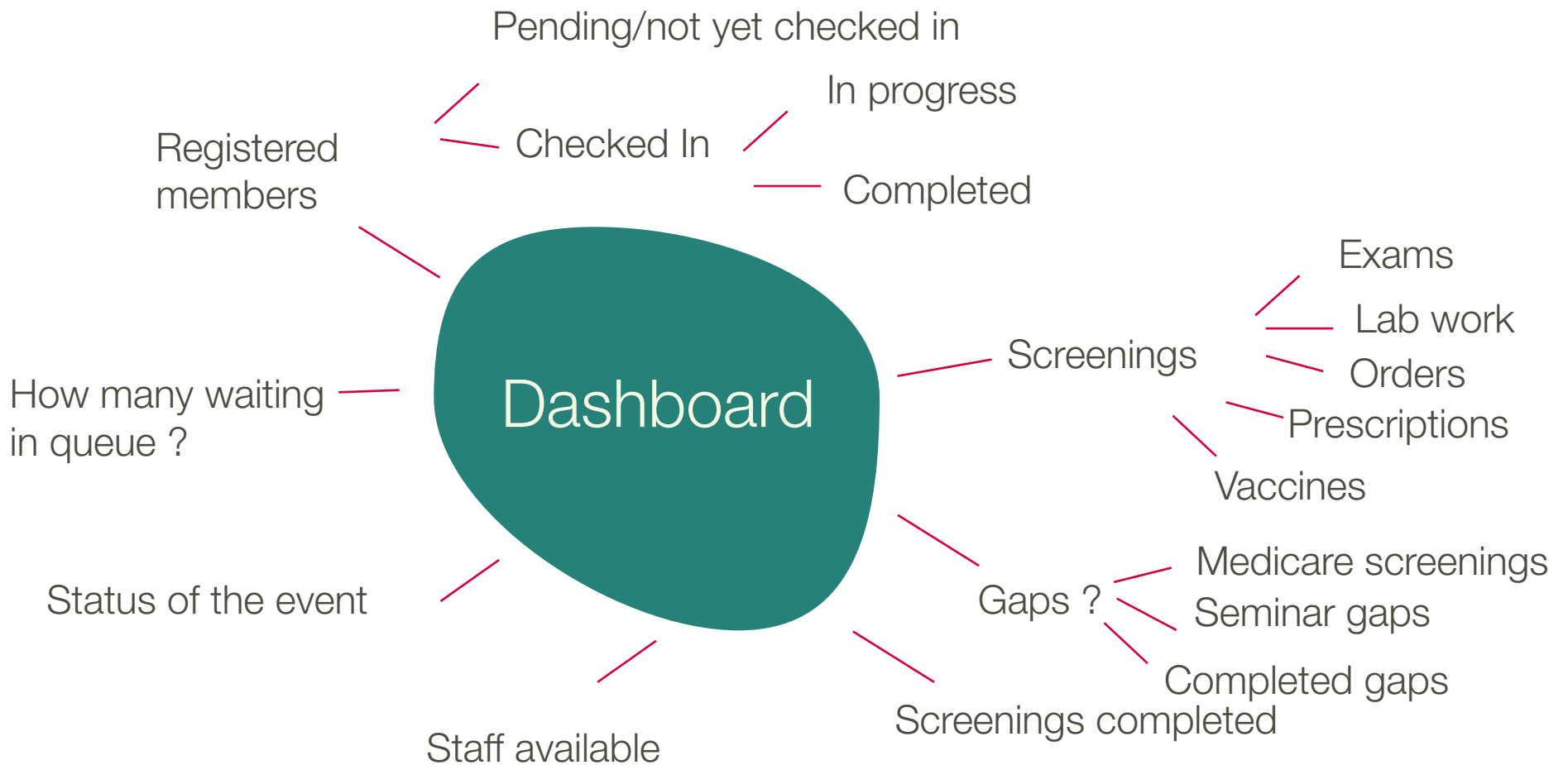
**6**

Screening	Medicare Seminar Gaps	Medicare Screening Gaps	Screenings	Completed Gaps	Completed Screenings
Body Mass Index	0	5	7	3	4
Blood Pressure	0	5	7	0	0
Bone Mass Density	0	5	7	1	1
Spirometry	0	5	7	0	0
HBA1C	0	2	5	2	4
Lipid Panel	0	3	7	3	5
Glucose	0	0	4	0	3
Nephropathy	0	3	6	2	4
Retinal Eye Exam	0	3	5	0	0
<b>Totals</b>	<b>0</b>	<b>31</b>	<b>55</b>	<b>11</b>	<b>21</b>

Dashboard
Check In
Screenings
Check Out
Complete

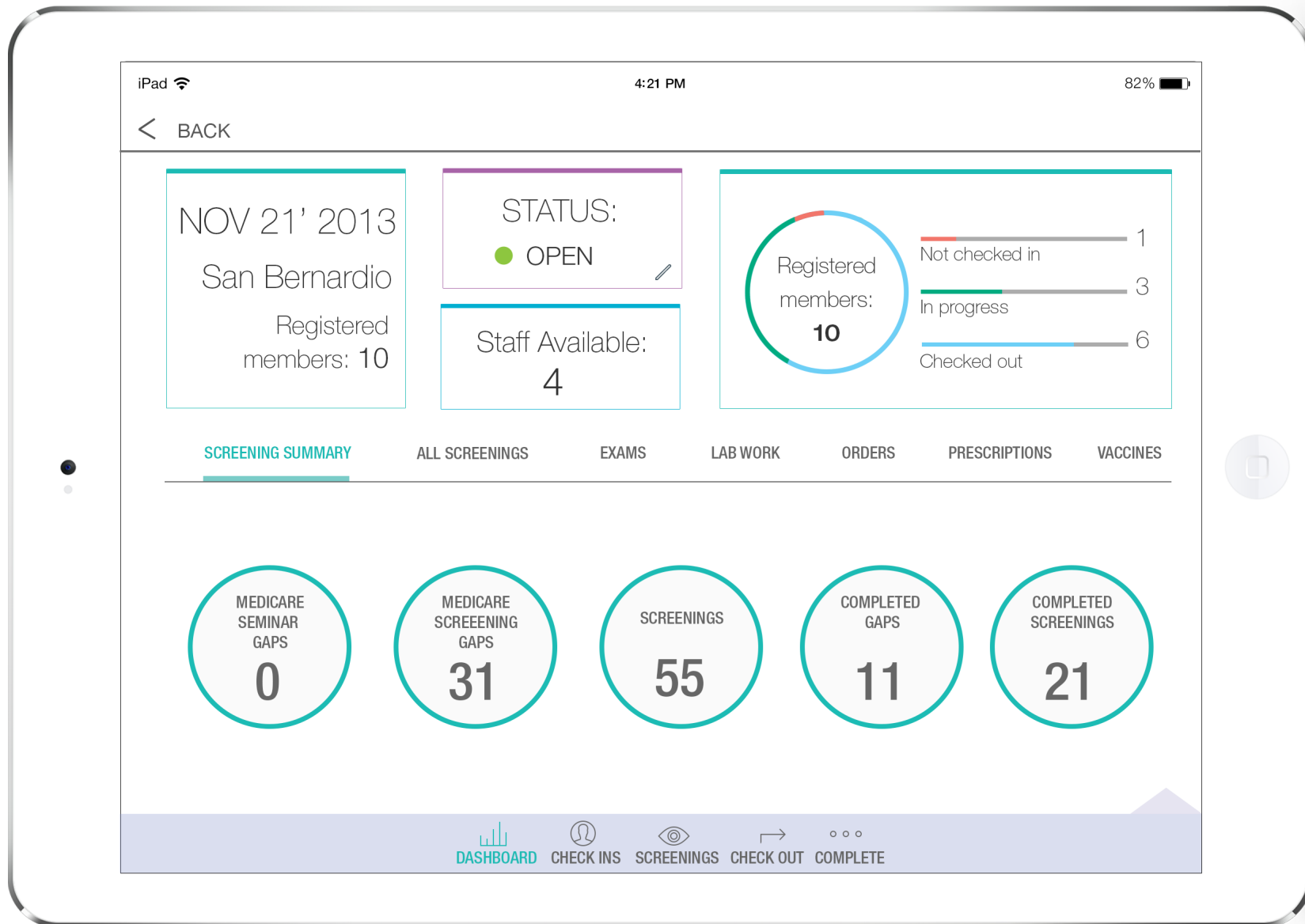
# Focus areas

---

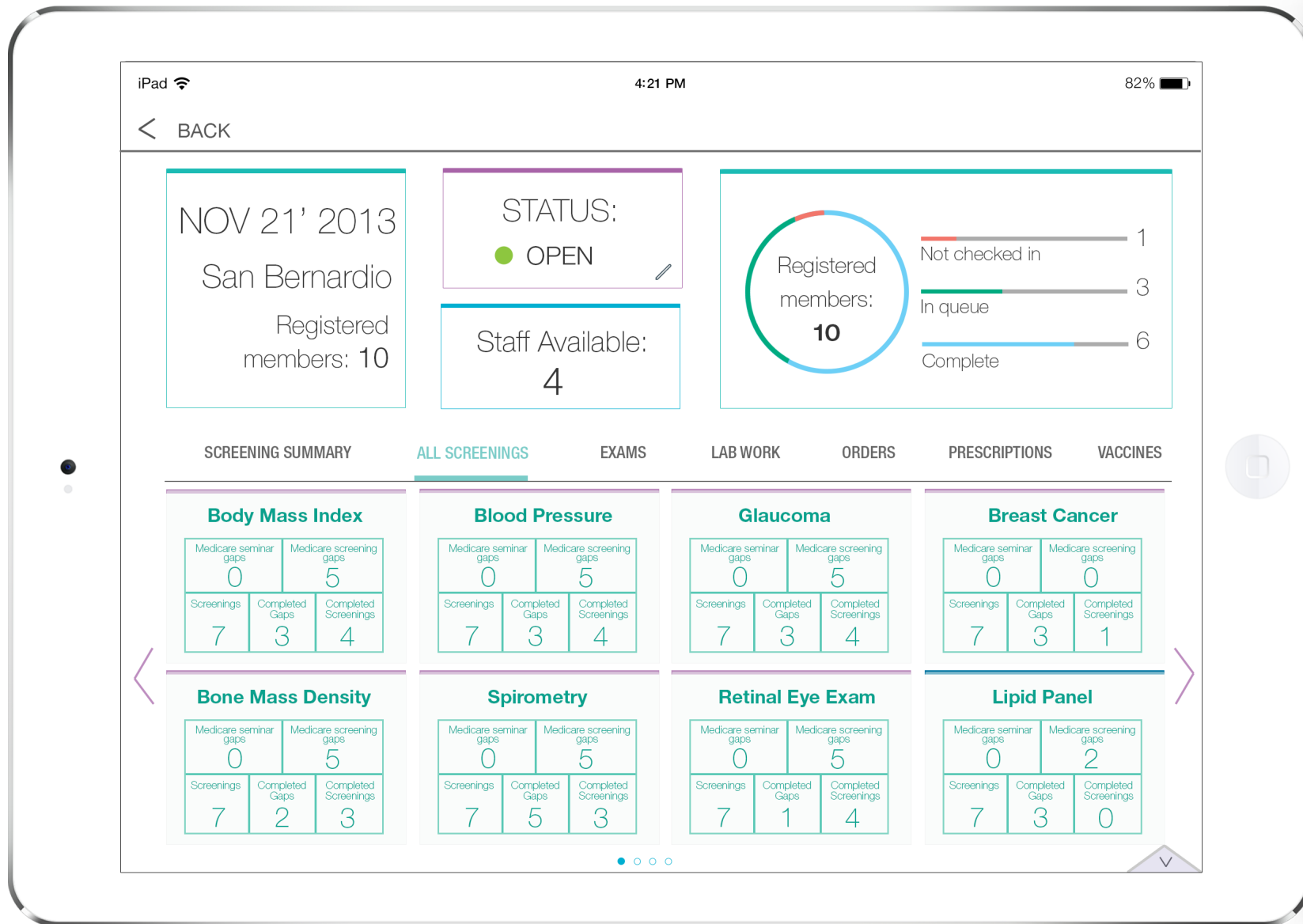




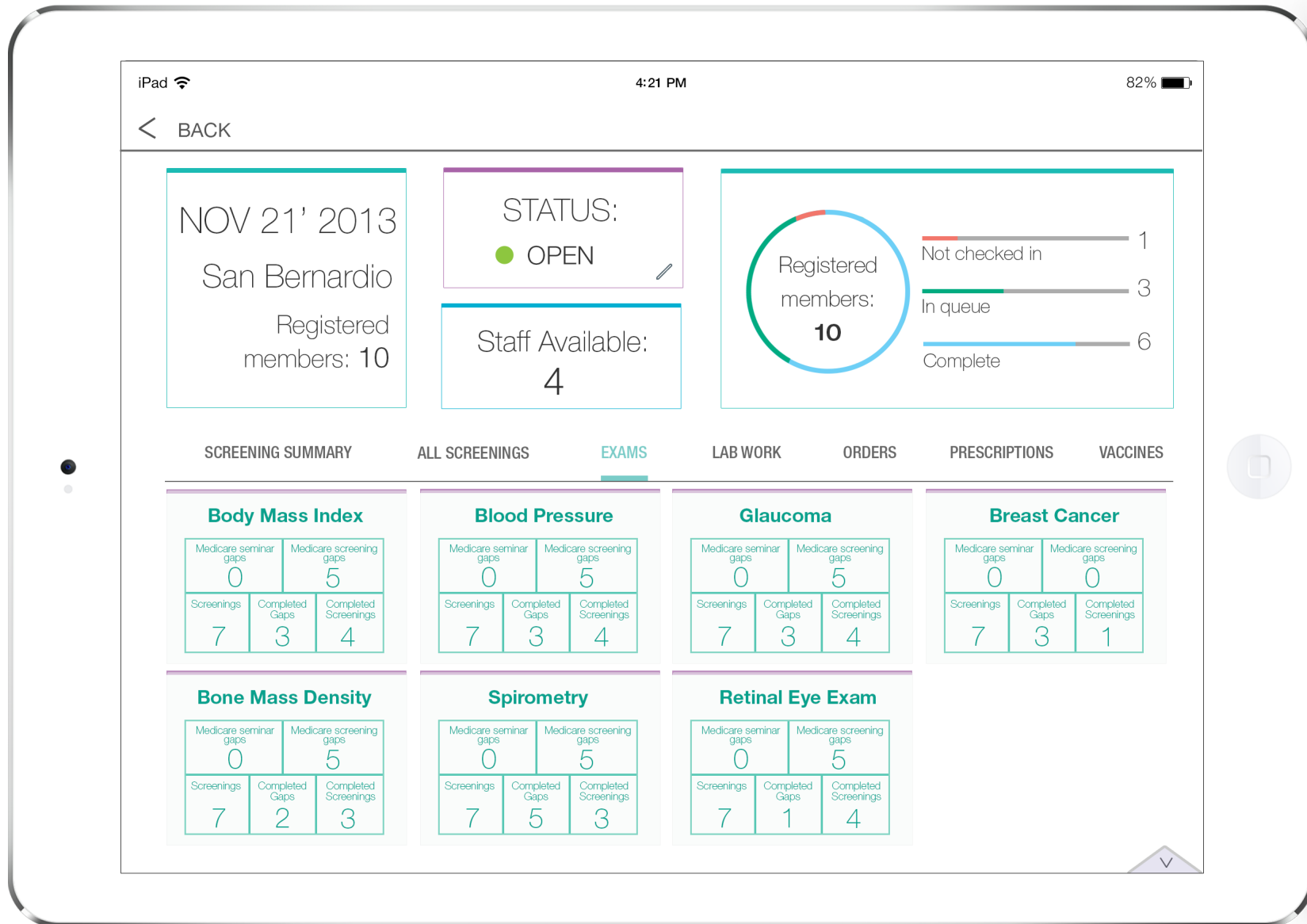
# Dashboard Screen : The Re-design



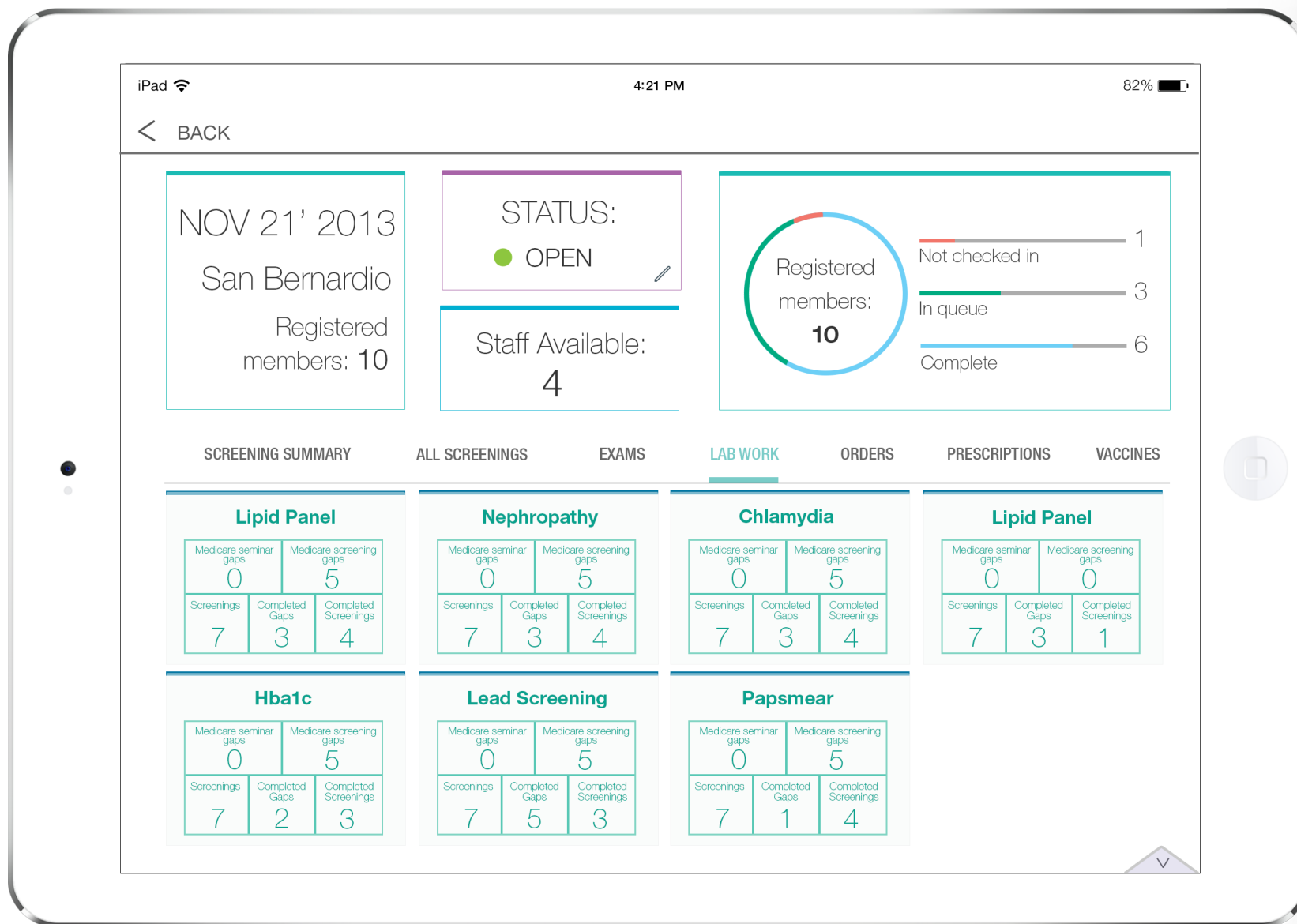
# Dashboard Screen : The Re-design



# Dashboard Screen: The Re-design



# Dashboard Screen : The Re-design



# Design Features Targeted

---

Clean interface with lots of breathing space.

Look and feel in sync with Apple's iOS 7 flat, clean and colorful look and feel.

At a glance overview of each aspect that needs monitoring.

Color coded indicators for number of patients and the overall current progress with screening.

Bottom toolbar that collapses when needed.

Clarity in section recognition with use of blocks and specific colors.

Scrolling feature used to sectionalize screening rather than cram all data into one screen.

Easy to find the information needed from all the data.